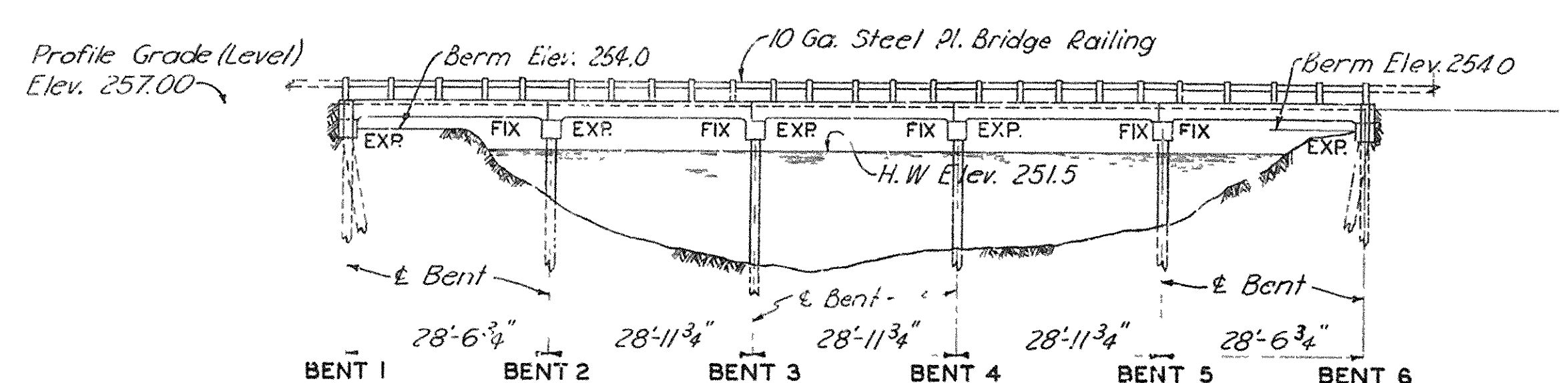


FED. ROAD DIV. NO.	STATE	PROJECT NO.	FISCAL YEAR	SHEET NO.	TOTAL SHEETS
6	ARK.	1-083-1(2) 0.0d 1-55-1(2) 167 New		89	347
STATE JOB NO. 10614					

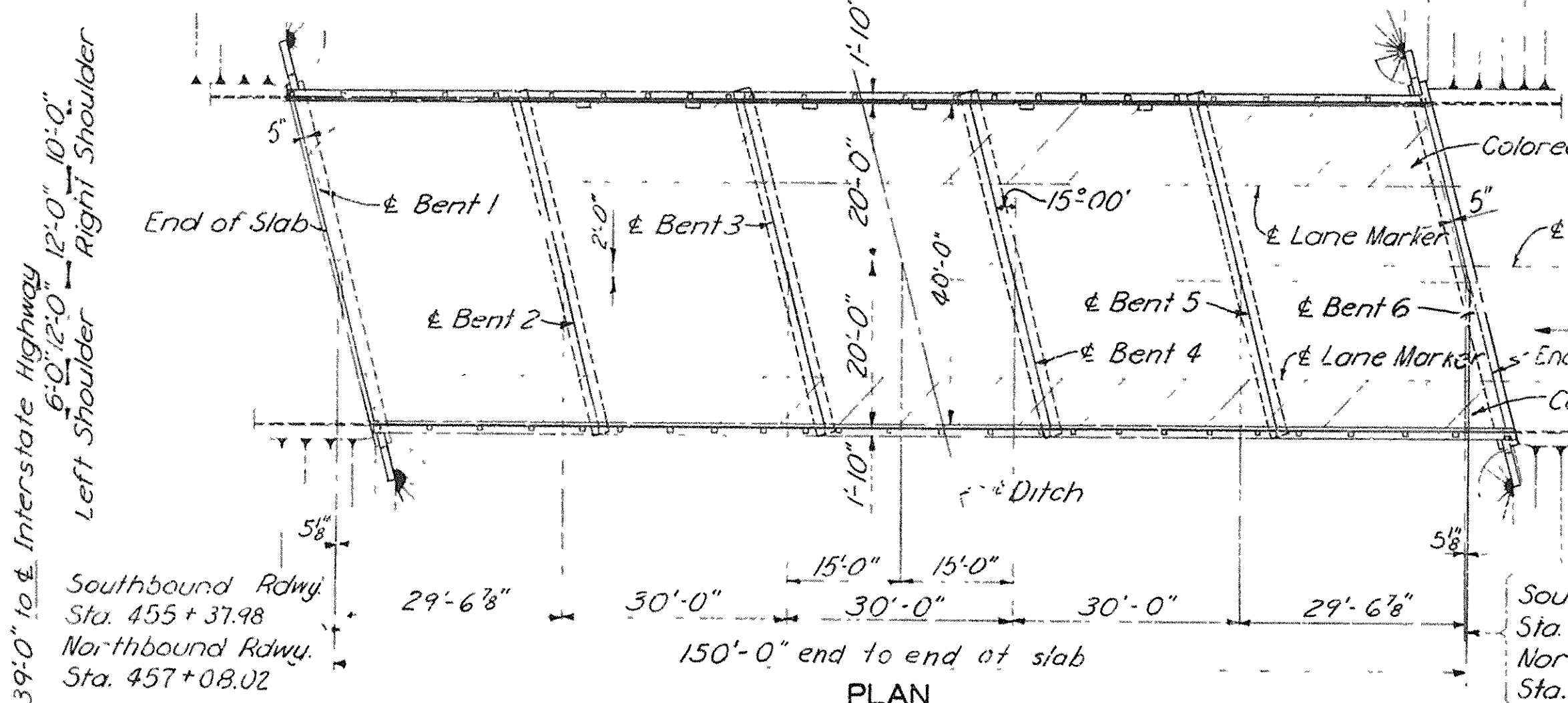
GENERAL NOTES

- SPECIFICATIONS:** Arkansas State Highway Commission (1940 Standard) and Special Provisions.
- DESIGN:** In accordance with the A.A.S.H.O. Standard Specifications for Highway Bridges, 1953 Edition.
Moment distributed between slab and curb in accordance with University of Illinois Experiment Station Bulletin No 346.
- DESIGN LOADING:** H20-S16-44 and 1956 Special Loading for Interstate Roadways (See diagram); H20-44 for Service Roads.
- DESIGN UNIT STRESSES:** Concrete $f_c = 1,200$ p.s.i. ($n=10$)
Reinforcing Steel $f_s = 20,000$ p.s.i. (Intermediate grade)
- CONCRETE:** All concrete shall be Class "S" air entrained.
- REINFORCEMENT:** All dimensions to reinforcing steel on detail drawings are to $\frac{1}{2}$ of bars, except where the clear distance is noted from the face of concrete. All reinforcing steel shall be lapped a minimum of 30 diameters unless otherwise shown or noted.
- COLORED CONCRETE SHOULDERS:** Concrete surfaces within shoulder limits on Main Roadway Bridges shall be colored black with an approved crystalline pigment. See Special Provisions.
- BEVELED EDGES:** All exposed edges of concrete shall be beveled $\frac{3}{4}$ " unless otherwise shown or noted.
- CONSTRUCTION JOINTS:** Construction joints shall be made only where shown on the plans.
- PILING:** All piles shall be 16" octagonal precast concrete and shall be driven to a minimum bearing value of 32 tons each. One test pile shall be driven for each of the four bridges as shown or as directed by the Engineer and loaded in accordance with the Special Provisions except as specified in Note "A" on this sheet. From the tests the necessary length of the remaining piles shall be determined. Minimum penetration into natural ground for all piles shall be 20'.
- FILLED JOINT:** Where filled joints are shown on the plans, the joint filler shall conform to the requirements of A.A.S.H.O. Specification M153, Type III.
- JOINT SEAL:** Material for Joint Seal shall conform to the Special Provision for Joint Seal in Concrete Pavements.



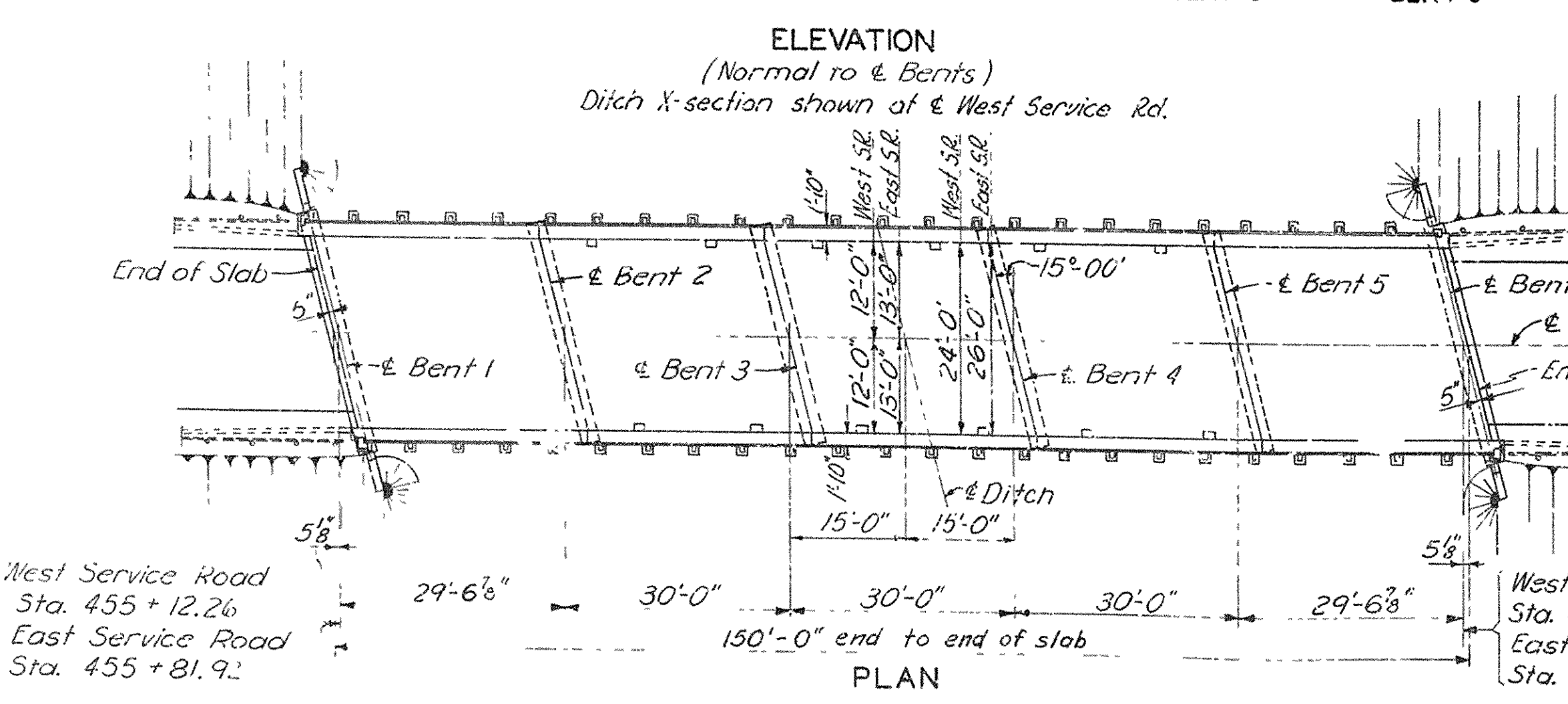
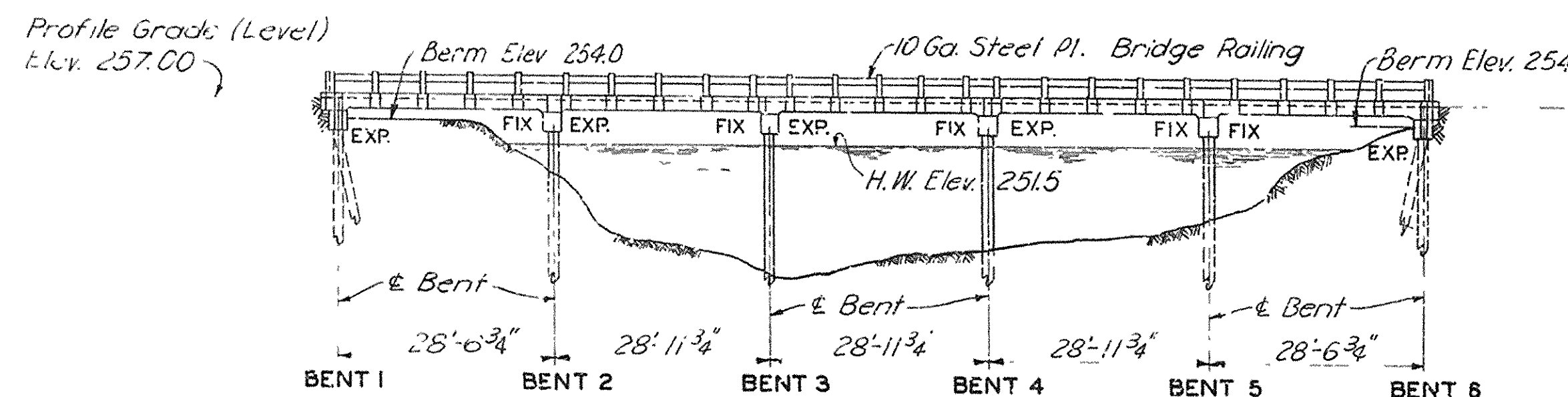
Note: See Road Plans for details of Earthwork at End Bents and for details of Approach Slabs.

Ditch X-section shown at $\frac{1}{2}$ Southbound Rdwy.

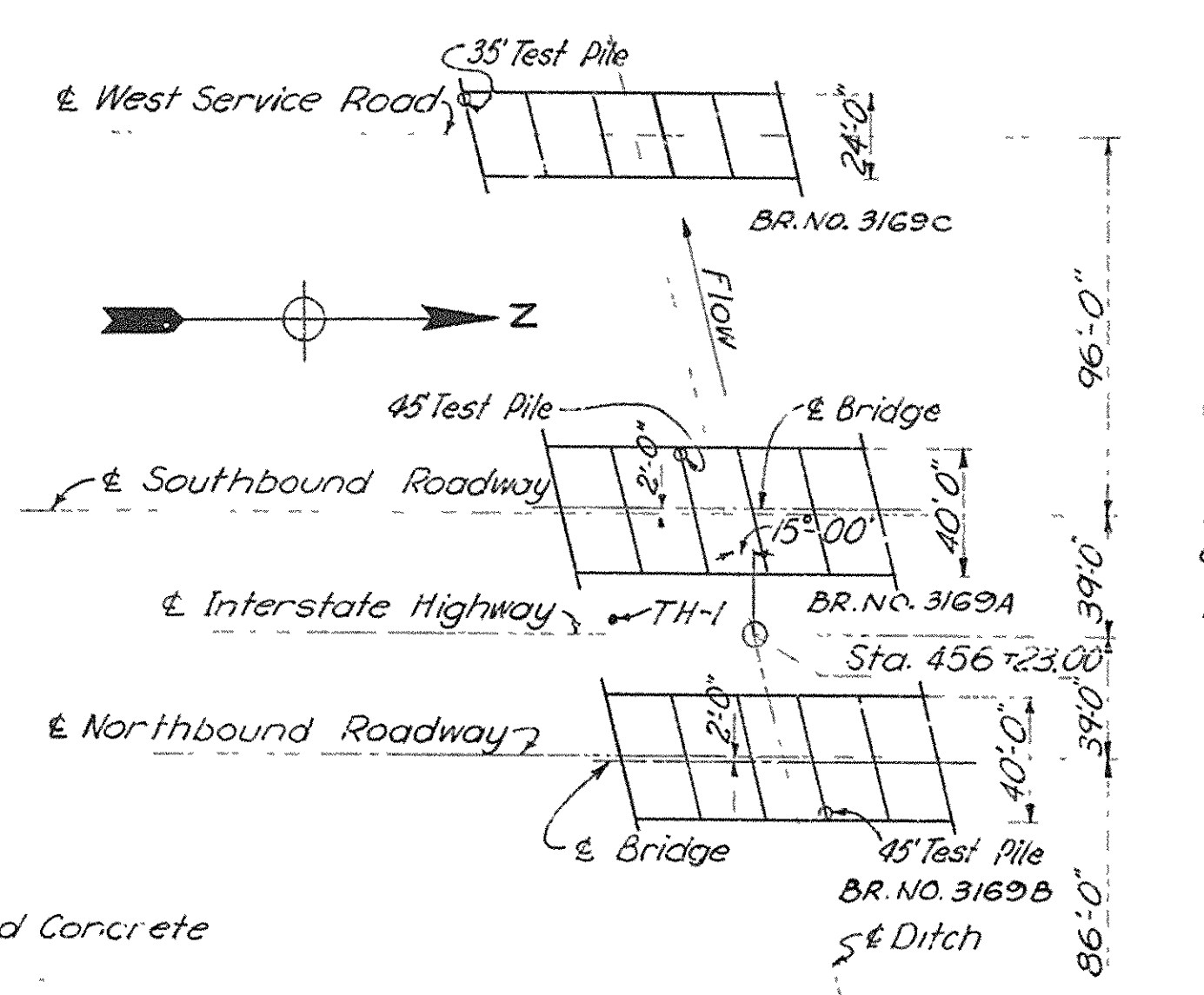


Note: Plan shown above is for Bridge on Southbound Roadway. Plan of Bridge on Northbound Roadway is Symm. by 180° rotation.

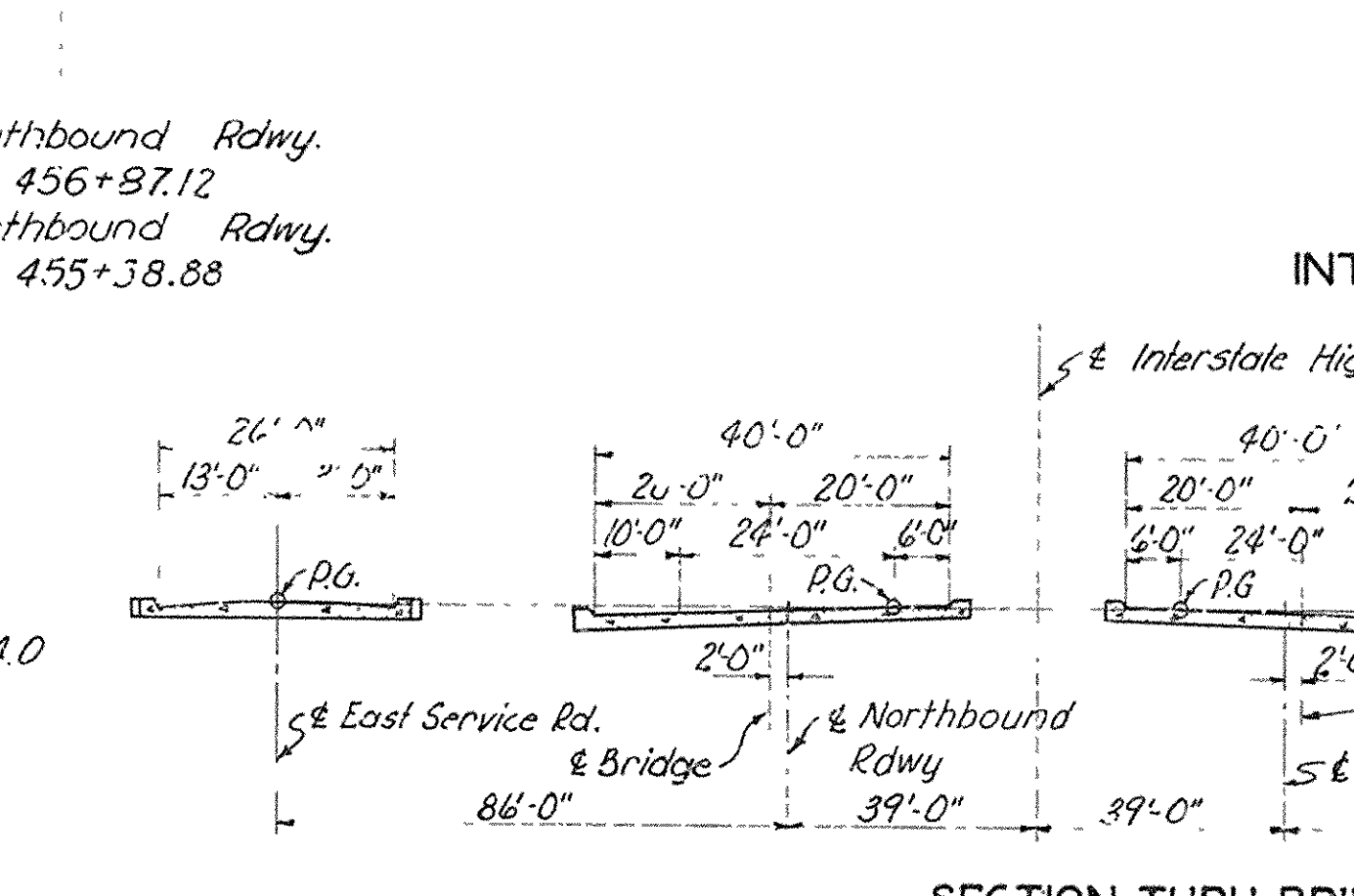
MAIN ROADWAY BRIDGE



SERVICE ROAD BRIDGE



LOCATION PLAN
Note: Stationing is measured along $\frac{1}{2}$ Interstate Highway.

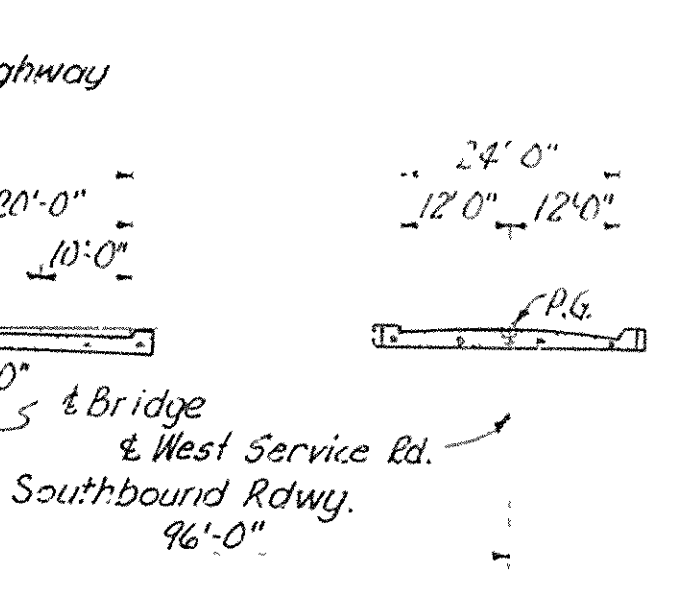
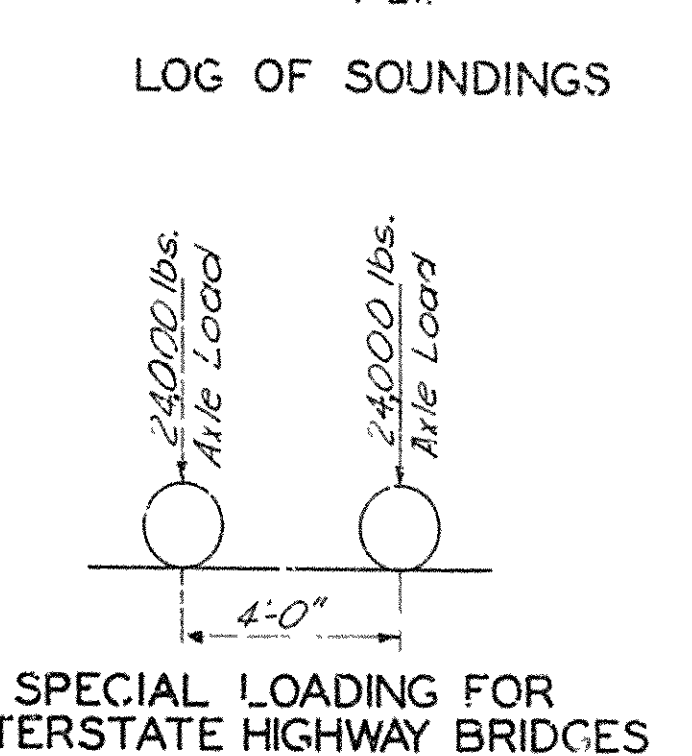


SECTION THRU BRIDGES

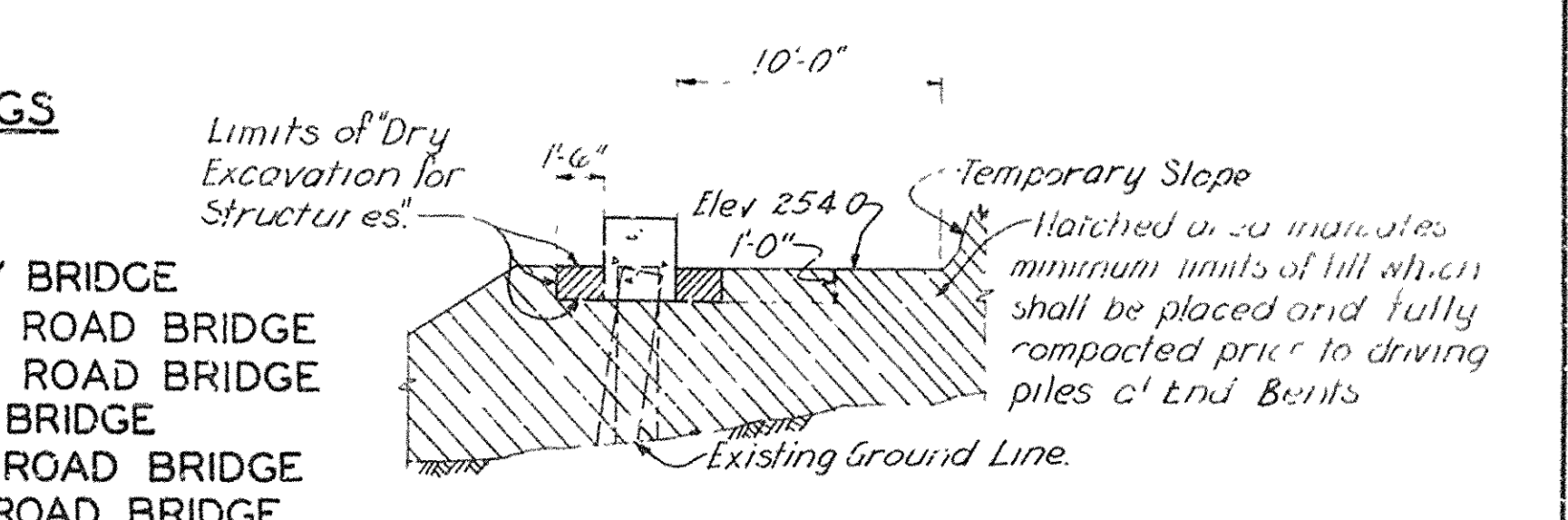
BENCH MARK:
Nail in root 20" Walnut Tree, 200' rt. of Sta. 461+00. Elev. 253.98.

Note "A" Loading tests for test piles may be waived by the Engineer if the formulae of the Special Provisions indicate that adequate bearing capacity has been attained.

DRAINAGE DATA
Drainage Area 205 Sq. Mi.
Runoff Coefficient 0.3
Required Waterway (Tailbot) 368 Sq. Ft.
Effective Opening (H.W. Elev. 251.5) 1100 Sq. Ft.



- INDEX OF DRAWINGS**
- GENERAL PLAN AND ELEVATION
 - TABLE OF QUANTITIES
 - PLAN BENTS FOR MAIN ROADWAY BRIDGE
 - PLAN BENTS - WEST SERVICE ROAD BRIDGE
 - PILE BENTS - EAST SERVICE ROAD BRIDGE
 - SLAB DETAILS - MAIN ROADWAY BRIDGE
 - SLAB DETAILS - WEST SERVICE ROAD BRIDGE
 - SLAB DETAILS - EAST SERVICE ROAD BRIDGE
 - BAR LIST
 - BRIDGE RAILING DETAILS
 - TYPICAL BAR TYPES AND HOOK DIMENSIONS
 - TYPICAL DETAILS OF SUPPORTS AND SPACERS FOR REINFORCING STEEL



FILL AT END BENT - EAST SERVICE ROAD

BRIDGES OVER PEMISCOT BAYOU AT STA. 456+23.00

GENERAL PLAN AND ELEVATION

MISSISSIPPI & CRITTENDEN COUNTIES
FAI 55

SECTION II
ARKANSAS STATE HIGHWAY COMMISSION

LITTLE ROCK, ARK.

DRAWN BY: R.J.S. DATE: JULY 1957 SCALE: NOT TO SCALE
TRACED BY: A.R. DATE: JULY 1957
CHECKED BY: R.E.S. DATE: AUG 1957 SHEET 1 OF 12

BRIDGE NO. 3169A, B, C & D DRAWING NO. 10114

1543-5
975871

SUBMITTED BY:
REGISTERED PROFESSIONAL ENGINEER
ARKANSAS NO. 628

SVERDRUP & PARCEL INC.
ENGINEERS - ARCHITECTS
ST. LOUIS, MO.

JOB 10614
SUMMARY OF QUANTITIES
BRIDGES OVER PEMISCOT BAYOU

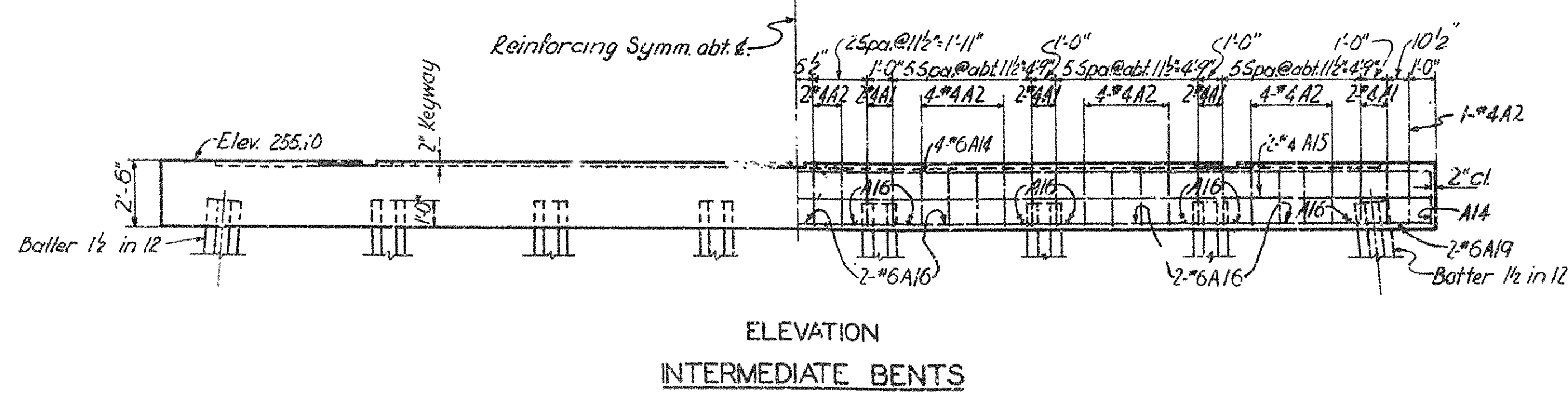
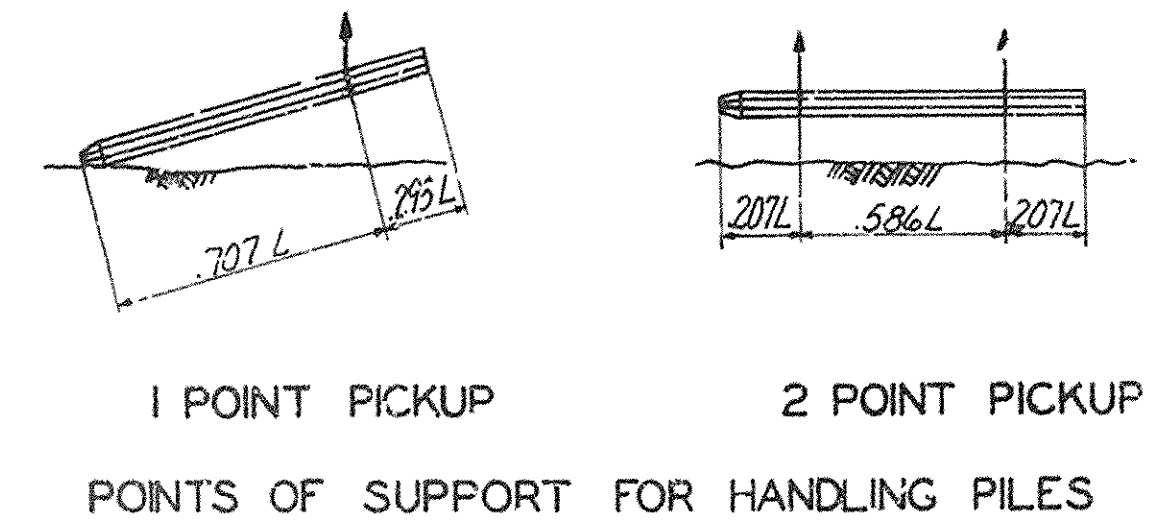
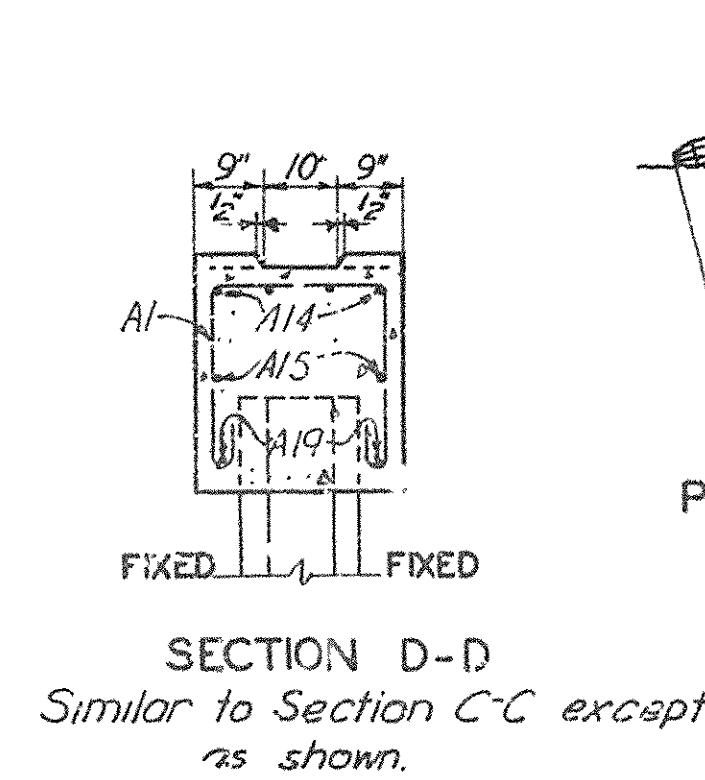
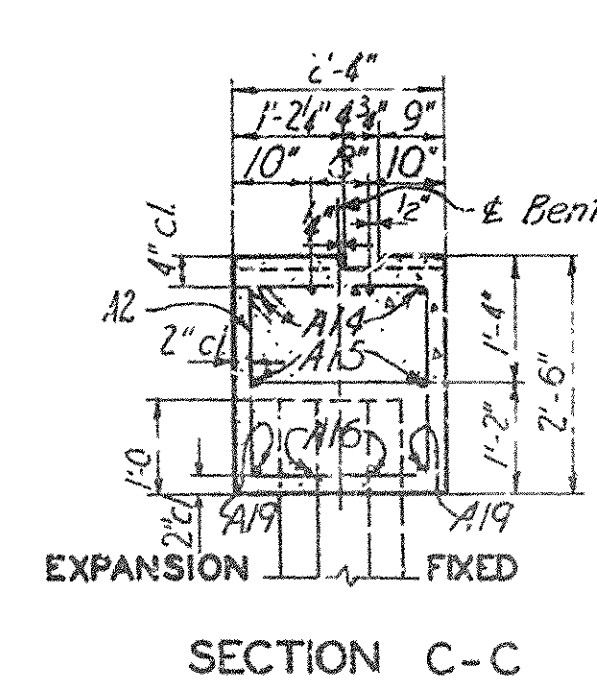
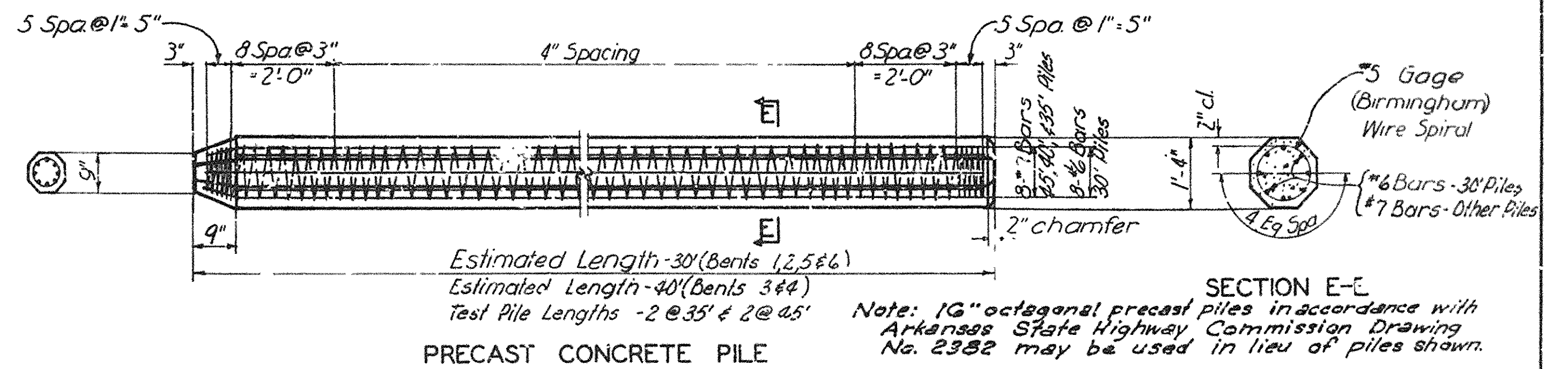
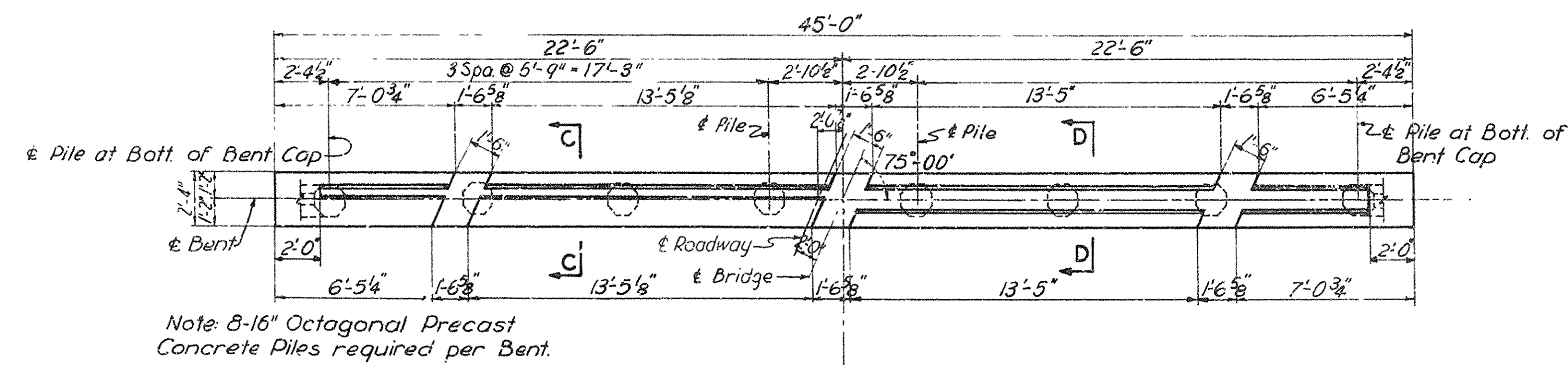
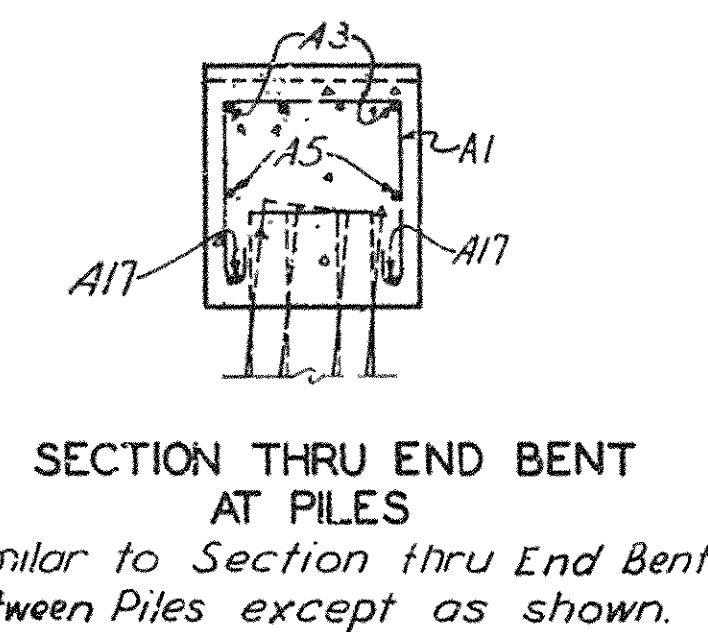
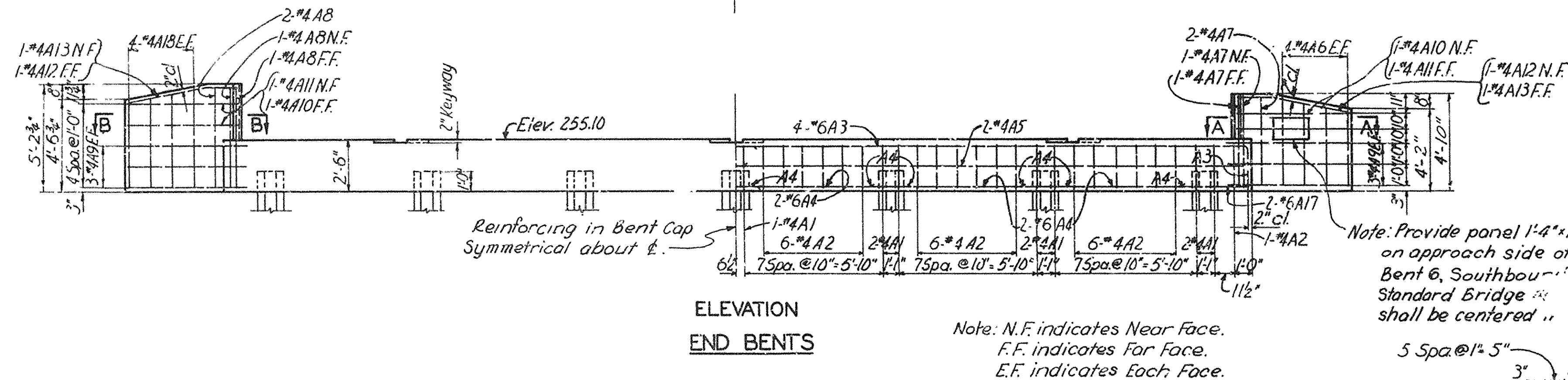
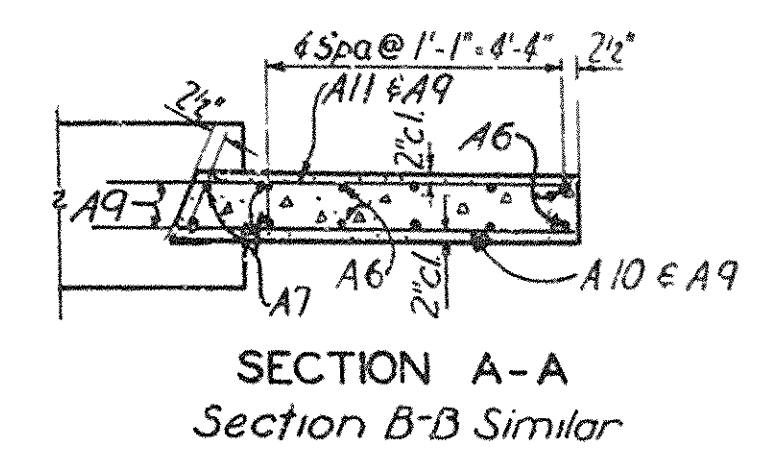
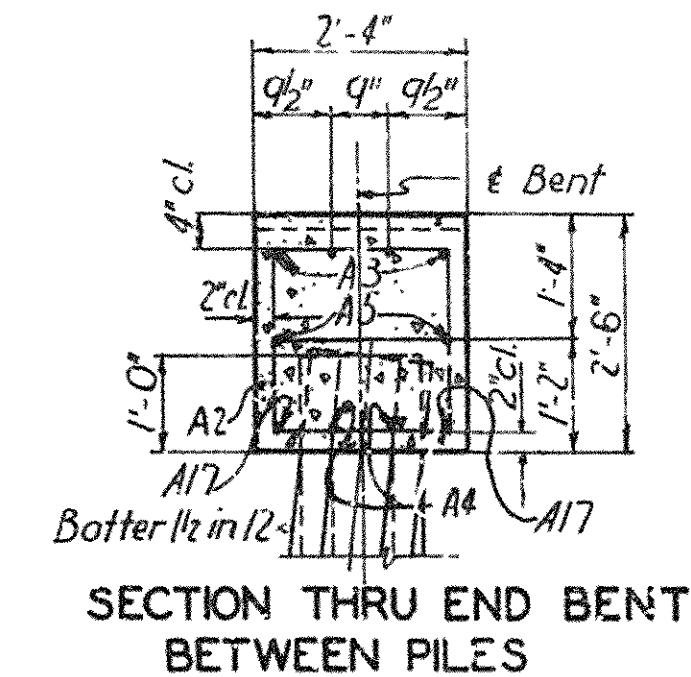
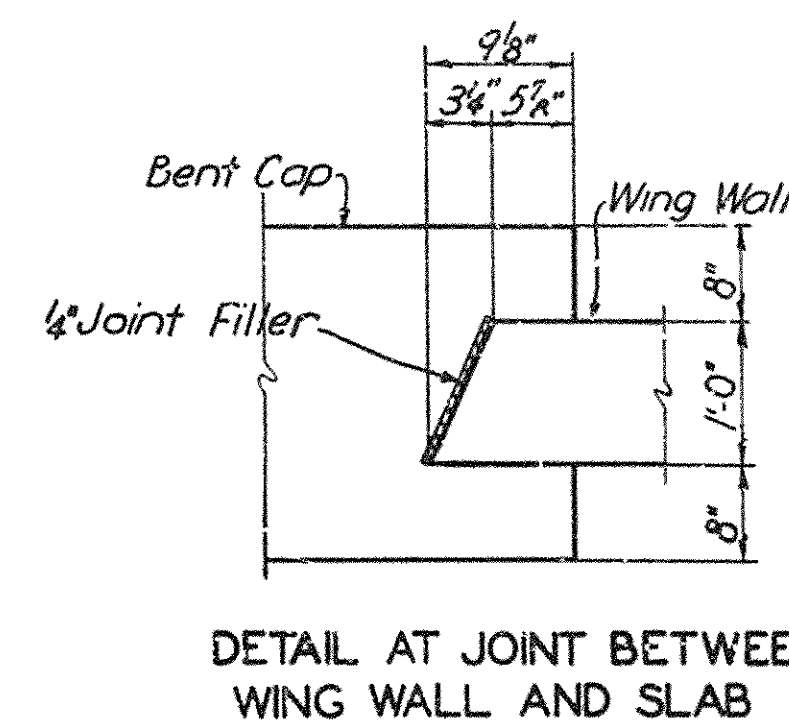
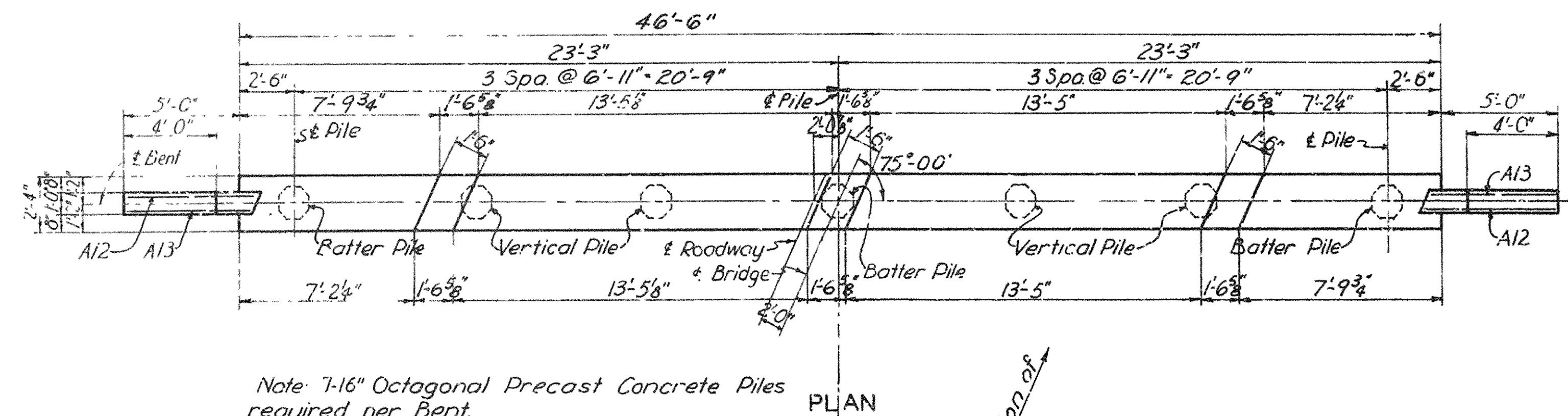
ITEM NO.	ITEM	UNIT	BRIDGE NO. 3162-A & 3162-B CODE TYPE X-020 MAIN ROADWAY BRIDGES (2)				BRIDGE NO. 3162-D CODE TYPE Y-050 WEST SERVICE ROAD BRIDGE				BRIDGE NO. 3162-C CODE TYPE Y-050 EAST SERVICE ROAD BRIDGE				JOB TOTAL
			BENTS 1 & 6	BENTS 2 THRU 5	SPANS 1 & 5	SPANS 2 THRU 4	BENTS 1 & 6	BENTS 2 THRU 5	SPANS 1 & 5	SPANS 2 THRU 4	BENTS 1 & 6	BENTS 2 THRU 5	SPANS 1 & 5	SPANS 2 THRU 4	
SP801-2	DRY EXCAVATION FOR STRUCTURES	CU. YD.	95	—	—	—	28	—	—	—	16	—	—	—	139
SP804-4	BEARING PILES (16" Octagonal Concrete)	LIN. FT.	840	2,250	—	—	305	700	—	—	305	700	—	—	5,100
SP804-4	LOADING TEST PILES	EACH	—	2	—	—	1	—	—	—	1	—	—	—	4
SP&802	CLASS "S" CONCRETE FOR BRIDGES	CU. YD.	46	73	288	430	15	23	91	134	16	25	94	139	1374
SP	STEEL PLATE BRIDGE RAILING	LIN. FT.	—	—	241	360	—	—	119	180	—	—	119	180	1,199
SP&803	REINFORCING STEEL	LB.	4,258	6,729	69,734	103,951	1,343	2,177	24,592	36,309	1,395	2,277	25,869	38,225	116,859
929	BRIDGE NAME PLATES (TYPE "C")	EACH	2	—	—	—	1	—	—	—	1	—	—	—	4

BRIDGES OVER PEMISCOT BAYOU
AT STA. 456+23.00
TABLE OF QUANTITIES
MISSISSIPPI & CRITTENDEN COUNTIES
FAI 55 INTERSTATE HIGHWAY
SECTION X
ARKANSAS STATE HIGHWAY COMMISSION
LITTLE ROCK, ARK.
DRAWN BY: R.E.S. DATE: SEPT., 1957 SCALE: NOT TO SCALE
TRACED BY: F.P.N. DATE: SEPT., 1957
CHECKED BY: B.J.S. DATE: JAN., 1958 SHEET 2 OF 12
BRIDGE NO. 3162A,B,C&D DRAWING NO. 10115

SVERDRUP & PARCEL, INC.
ENGINEERS - ARCHITECTS
ST. LOUIS, MO.

1343-5
5/15/62

FED. ROAD DIV. NO.	STATE	PROJECT NO.	FISCAL YEAR	SHEET NO.	TOTAL SHEETS
6	ARK.	F-093-(121)Old F-555-(121)62New		91	347
STATE JOB NO.		10614			



Revised concrete pile note. R.L.C. 3-25-59

PILES OVER PEMISCOT BAYOU
 AT STA 456+2300

 PILE BENTS FOR MAIN ROADWAY BRIDGE

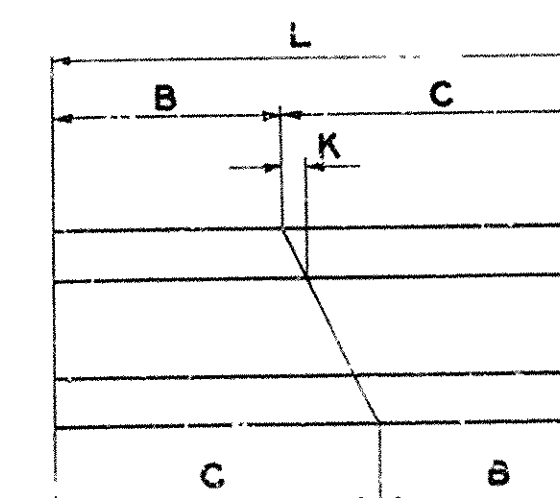
 MISSISSIPPI & CRITTENDEN COUNTIES
 FAI 55 INTERSTATE HIGHWAY
 SECTION V
 ARKANSAS STATE HIGHWAY COMMISSION
 LITTLE ROCK ARK
 DRAWN BY R.J.S. DATE JULY 1957 SCALE NOT TO SCALE
 TRACED BY L.A.R. DATE JULY 1957
 CHECKED BY R.E.S. DATE JULY 1957 SHEET 3 OF 12
 BRIDGE NO. 3/6544B DRAWING NO. 10/116

Note: Do not scale this drawing. Follow dimensions

MAIN ROADWAY BRIDGES

[illegible]

See Sheet 11 for Typical Bar Types and Hook Dimensions.



CUTTING DIAGRAM:

BRIDGES OVER PEMISCOT BAYOU
AT STA. 456+23.00

MISSISSIPPI & CRITTENDEN COUNTIES
FAI 55 INTERSTATE HIGHWAY
SECTION V

SECTION 2
ARKANSAS STATE HIGHWAY COMMISSION
LITTLE ROCK, ARK

LITTLE ROCK, ARK.

DRAWN BY: K.P.F. DATE: SEPT. 1957 SCALE: NOT TO SCALE

TRACED BY: K.P.E. DATE: SEPT 1957

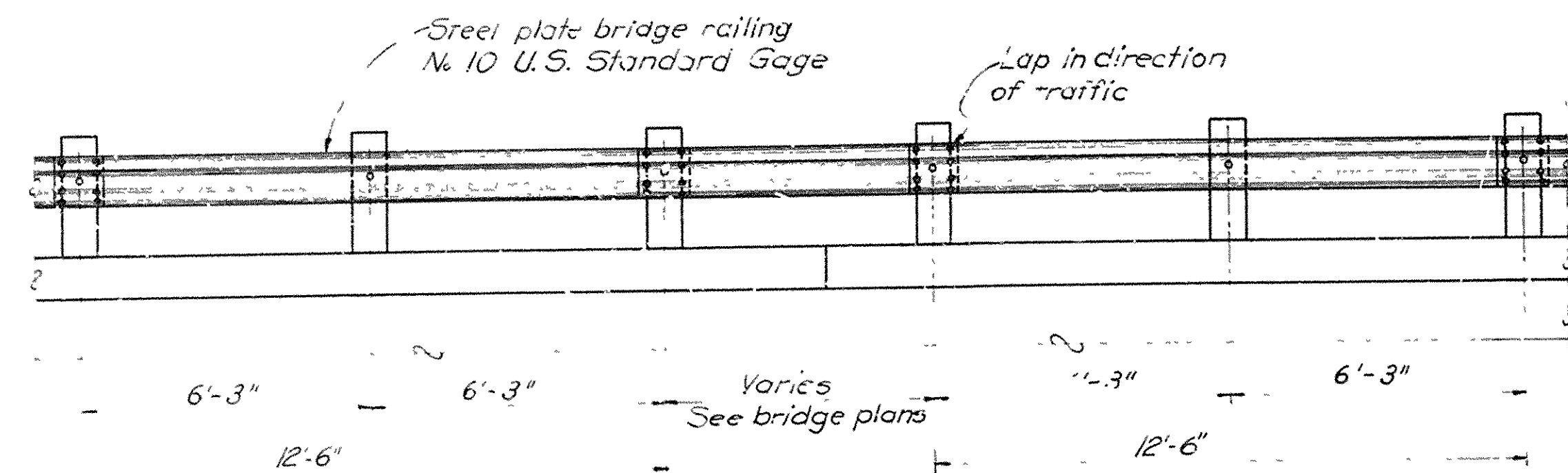
TRACED BY: W. E. S. DATE: SEPT. 1957
CHECKED BY: R. E. S. DATE: SEPT. 1957 SHEET 9 OF 12

DRAWING NO 10120

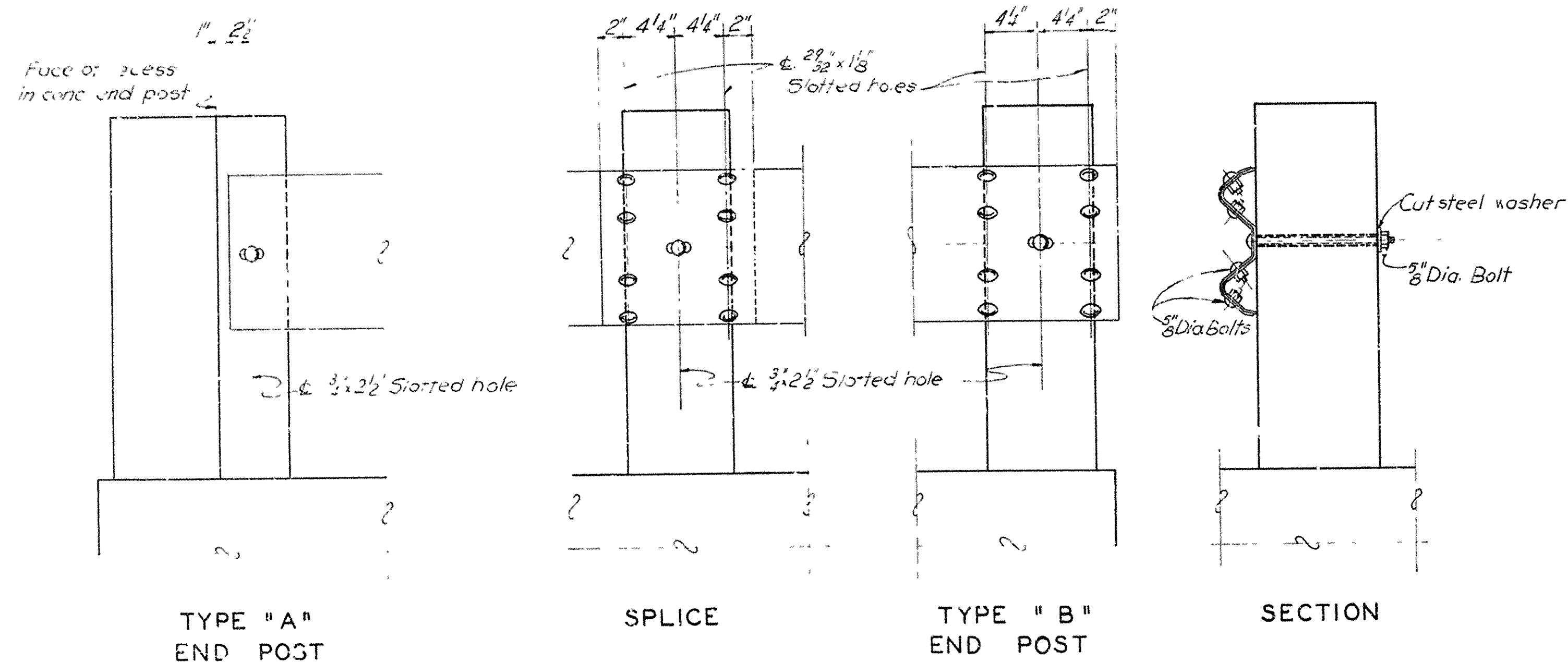
BRIDGE NO. 3169A,B,C&D DRAWING NO. 10121

FED. ROAD DIV. NO.	STATE	PROJECT NO.	FISCAL YEAR	SHEET NO.	TOTAL SHEETS
6	ARK.	1003-1191 01d 1-55-112162 New		98	347
STATE JOB NO. 10614					

391



TYPICAL ELEVATION

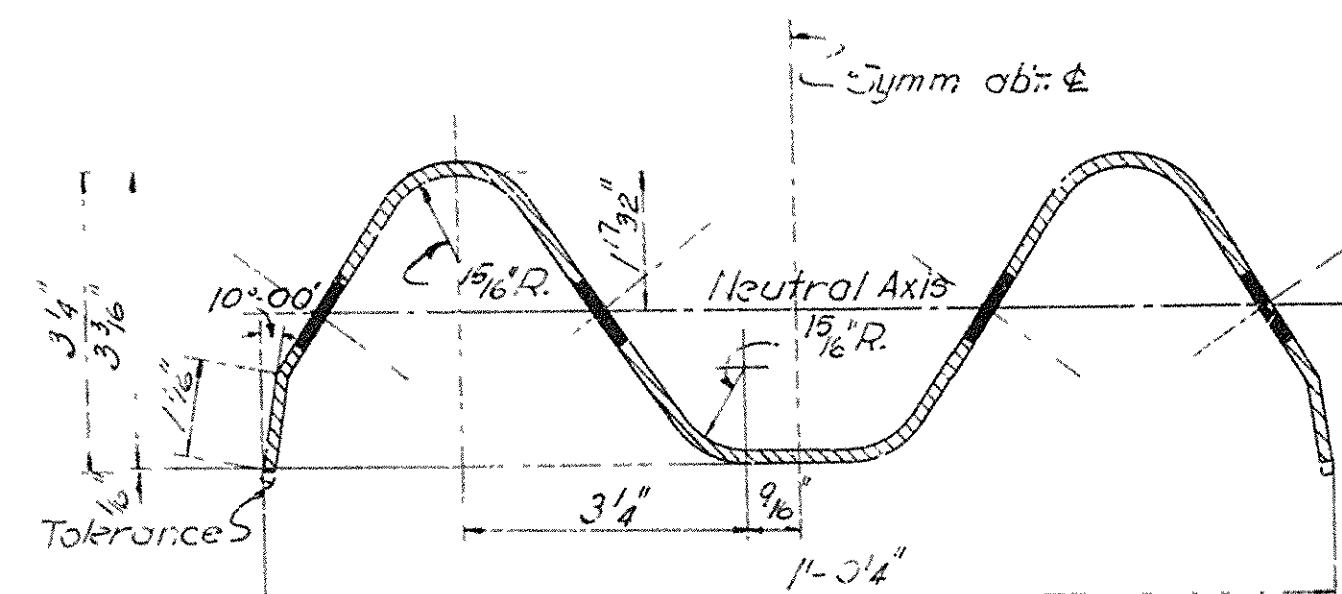


TYPE "A"
END POST

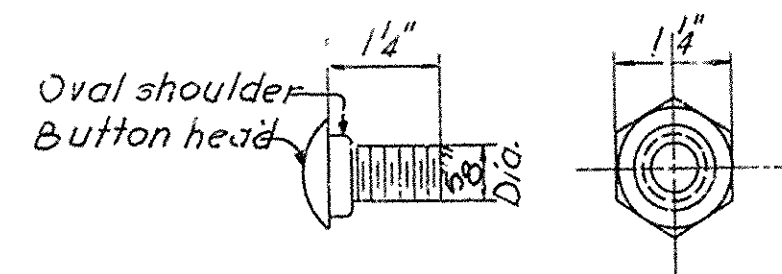
SPLICE

TYPE "B"
END POST

SECTION



SECTION THROUGH RAIL ELEMENT



SPLICE BOLT NUT
Note: Post bolt is similar
except for length.

STEEL PLATE BRIDGE RAILING

Notes: All bolts, nuts and washers shall be galvanized.
Bridge railing shall be painted same as
structural steel.
See Special Provisions.

BRIDGES OVER PEMISCOT BAYOU
AT STA. 456+23.00

BRIDGE RAILING DETAILS

MISSISSIPPI & CRITTENDEN COUNTIES
FAI 55 INTERSTATE HIGHWAY

SECTION X
ARKANSAS STATE HIGHWAY COMMISSION
LITTLE ROCK, ARK.

DRAWN BY: T.C. DATE: FEB 1957 SCALE: NOT TO SCALE
TRACED BY: T.C. DATE: FEB 1957
CHECKED BY: R.C.W. DATE: FEB 1957 SHEET 10 OF 12

BRIDGE NO. 3169A, B, C & D DRAWING NO. 10122

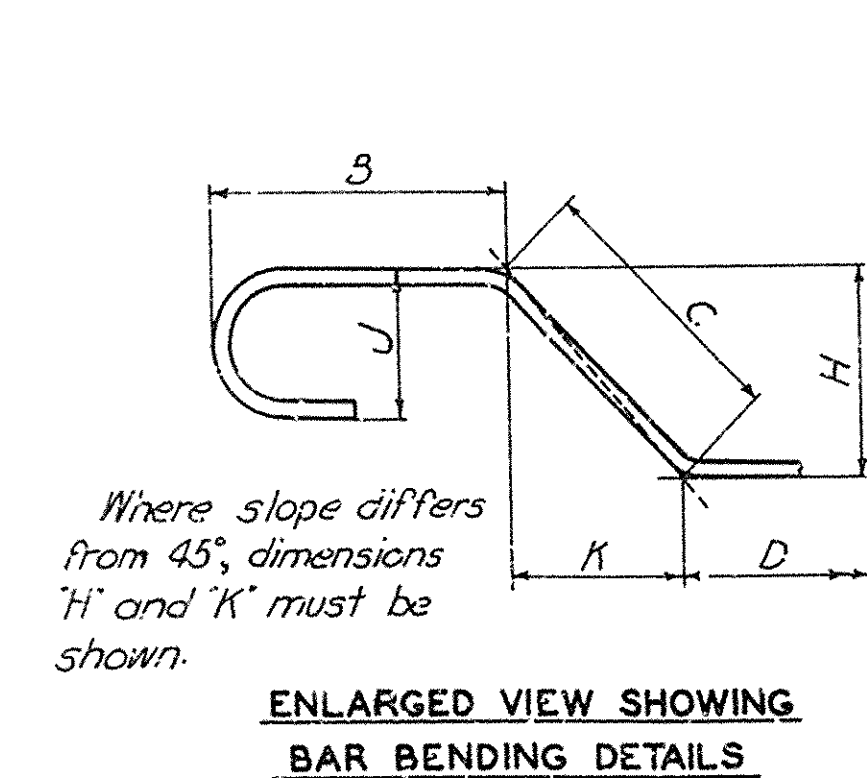
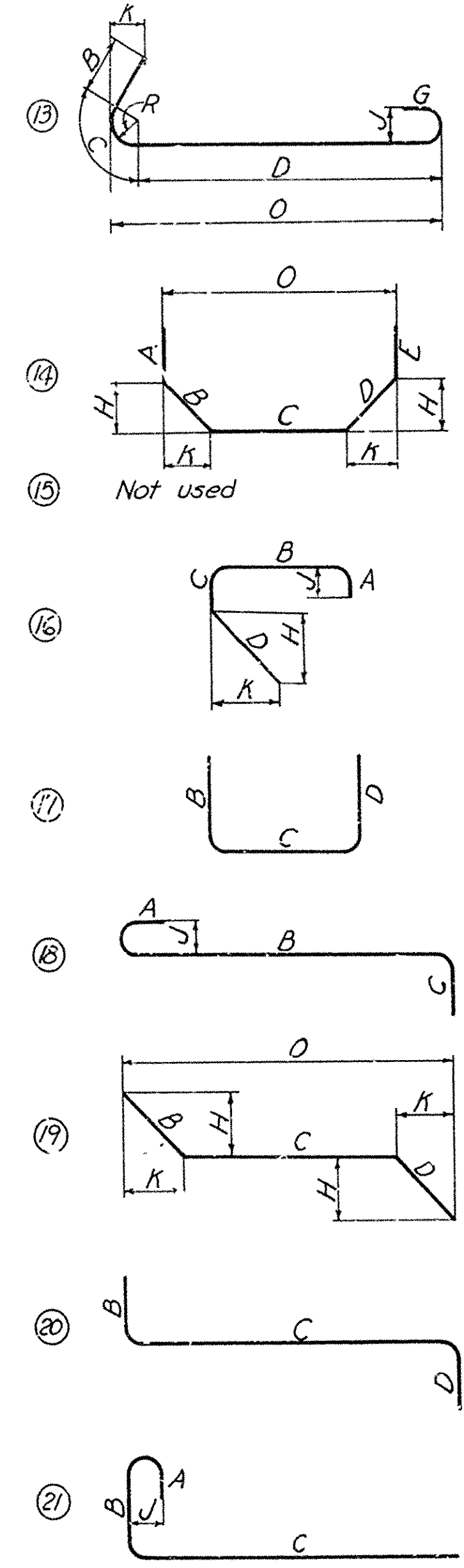
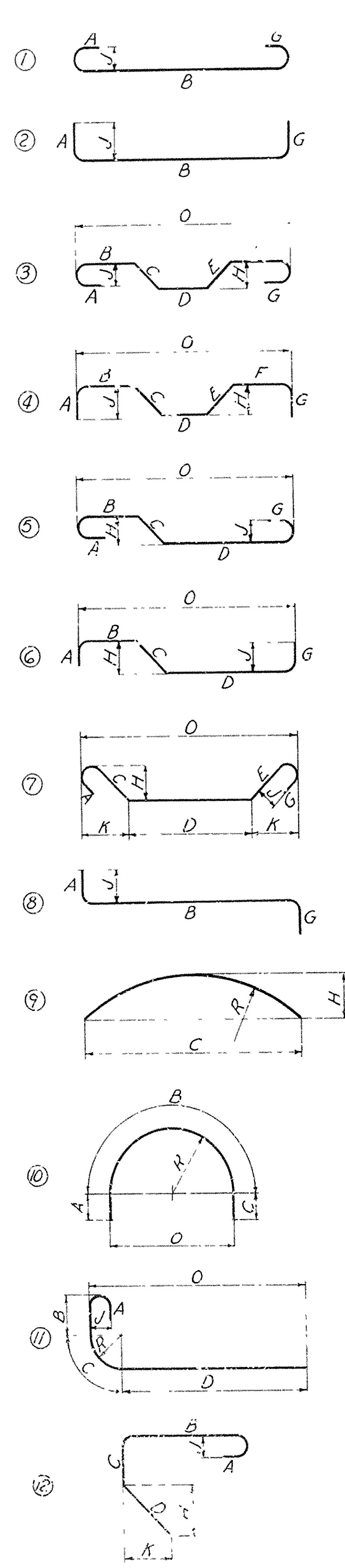
SVERDRUP & PARCEL, INC.
ENGINEERS - ARCHITECTS
ST. LOUIS, MO.

Note: Do not scale this drawing. Follow dimensions.

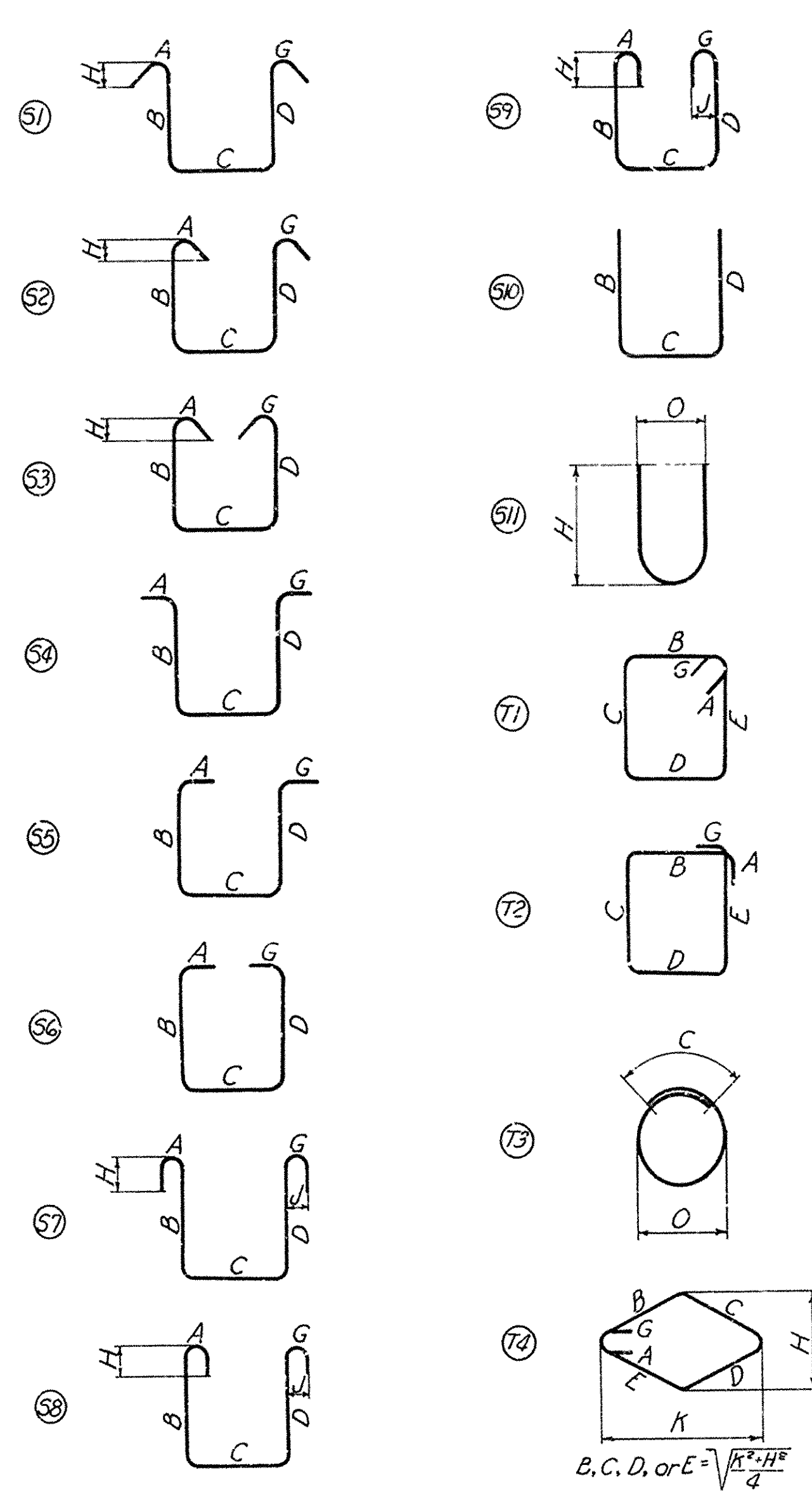
134-5
535/14

FED. ROAD DIV. NO.	STATE	PROJECT NO.	FISCAL YEAR	SHEET NO.	TOTAL SHEETS
6	ARK.	1003-1011 Old 155-102162 He		99	347
STATE JOB NO. 10614					

TYPICAL BAR TYPES



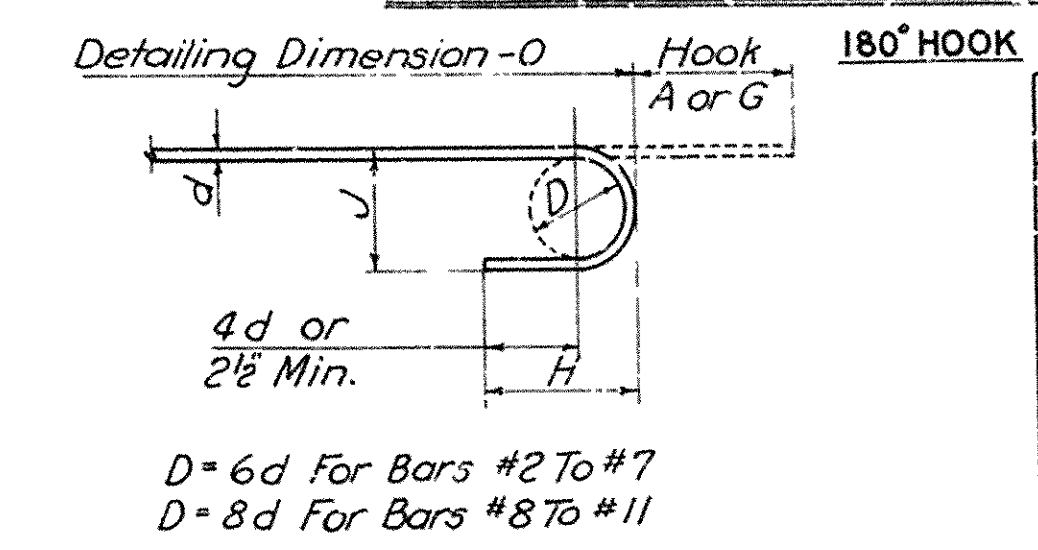
ENLARGED VIEW SHOWING BAR BENDING DETAILS



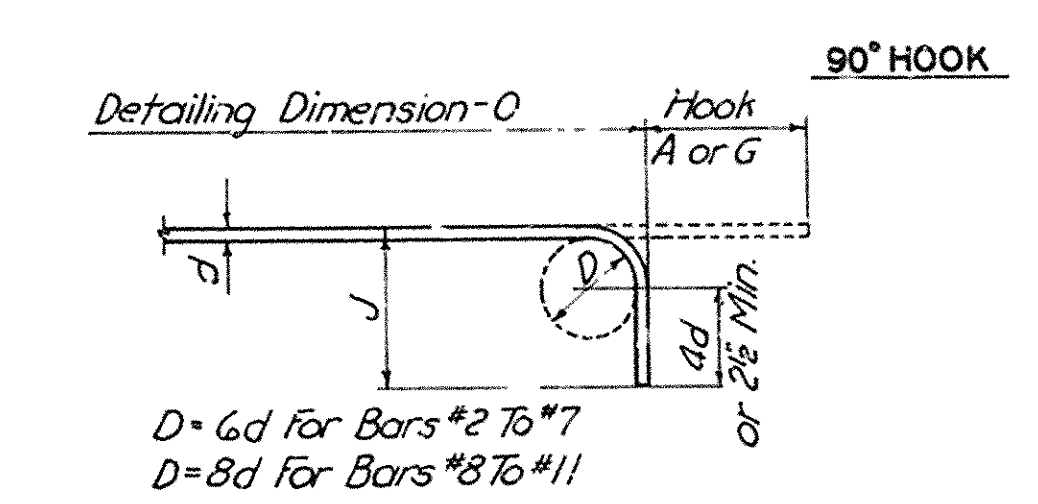
NOTES

- All dimensions are out to out, except "R" which is to inside of bend.
- "J" Dimension on 180° hooks to be shown in Bar List only where necessary to restrict hook size, otherwise standard hooks are to be used.
- Where "J" is not shown, "J" will be kept equal to or less than "H". Where "J" can exceed "H", it should be shown in Bar List.
- "H" Dimension on stirrups to be shown on Bar List where necessary to restrict hooks.
- Corrections in length, due to bending around a mandrel, will be made only when the radius "R" (as in types 11 and 13) exceeds the standard radii indicated in standard hook dimensions. However, the dimensions "A" or "G" shown for standard hooks have been corrected for curvature.
- All bends shown are bent around a standard mandrel, except where radius "R" is indicated.
- Figures in circles show bar types.
- Where "R" is shown on bar types 9, 10, 11, 12, 13, the length of bend shall be measured along outside of bend. The length of bar type T3 shall also be measured along outside of bar.

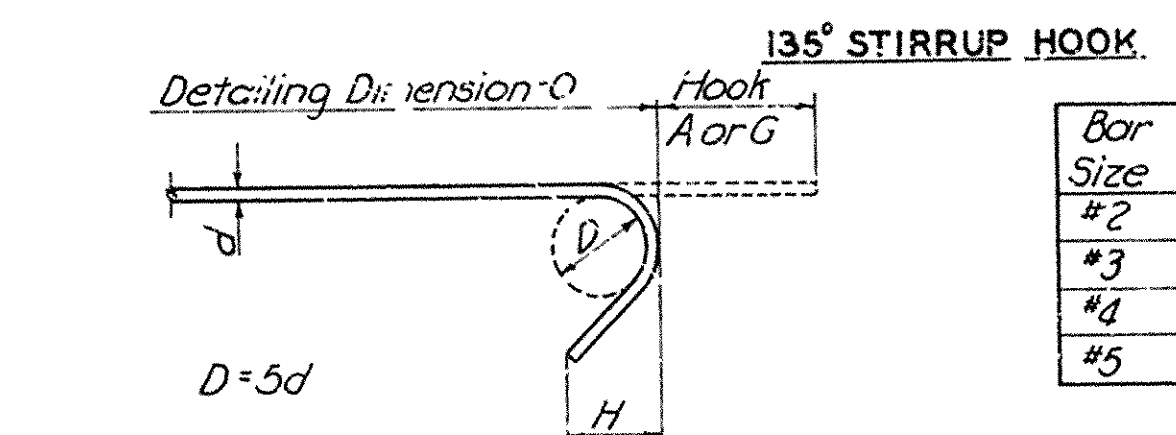
STANDARD HOOK DIMENSIONS



Bar Size	Hook A or G	Approx J	Approx H
#2	4"	2"	3 1/2"
#3	5"	3"	4"
#4	6"	4"	4 1/2"
#5	7"	5"	5"
#6	8"	6"	6"
#7	10"		
#8	11"	10"	9"
#9	13"	11 1/2"	10 1/2"
#10	15"	13 1/2"	11 1/2"
#11	17"	15 1/2"	13 1/2"



Bar Size	Hook A or G	Approx J	Approx H
#2	3"	3 1/2"	
#3	3"	4"	
#4	3"	4 1/2"	
#5	4"	5"	
#6	4"	6"	
#7	5"	7"	
#8	6"	9"	
#9	7"	10"	
#10	8"	11 1/2"	
#11	9"	13 1/2"	



Bar Size	Hook A or G	Approx J	Approx H
#2	3 1/2"	2"	
#3	4"	2 1/2"	
#4	4 1/2"	2 1/2"	
#5	5"	2 3/4"	

BAR SIZE EQUIVALENTS

#2	1/4"	#7	7/8"
#3	3/8"	#8	1"
#4	1/2"	#9	1 1/8"
#5	5/8"	#10	1 1/4"
#6	3/4"	#11	1 3/8"

BRIDGES OVER PISCOT BAYOU
AT STA. 456+23.00
TYPICAL BAR TYPES & HOOK DIMENSIONS
MISSISSIPPI & CRITTENDEN COUNTIES
FAI 55 INTERSTATE HIGHWAY
SECTION V
ARKANSAS STATE HIGHWAY COMMISSION
LITTLE ROCK, ARK.

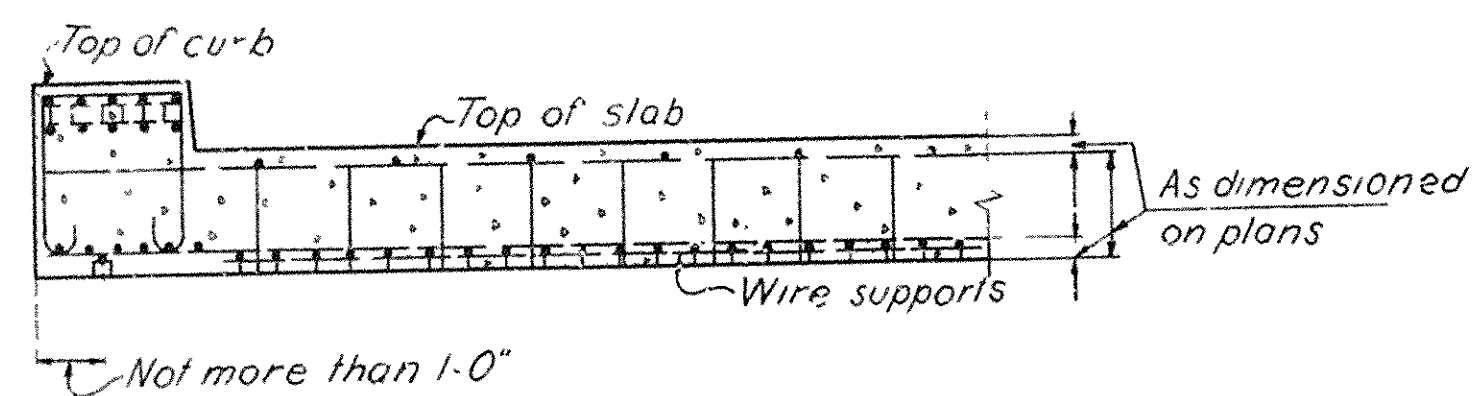
DRAWN BY: F.L.C. DATE: JAN 1958 SCALE: NOT TO SCALE
TRACED BY: F.L.C. DATE: JAN 1958
CHECKED BY: R.E.S. DATE: JAN 1958 SHEET 11 OF 12
BRIDGE NO. 3169A, B, C & D DRAWING NO. 10123

SVENDRUP & PARCEL, INC.
ENGINEERS - ARCHITECTS
ST. LOUIS, MO.

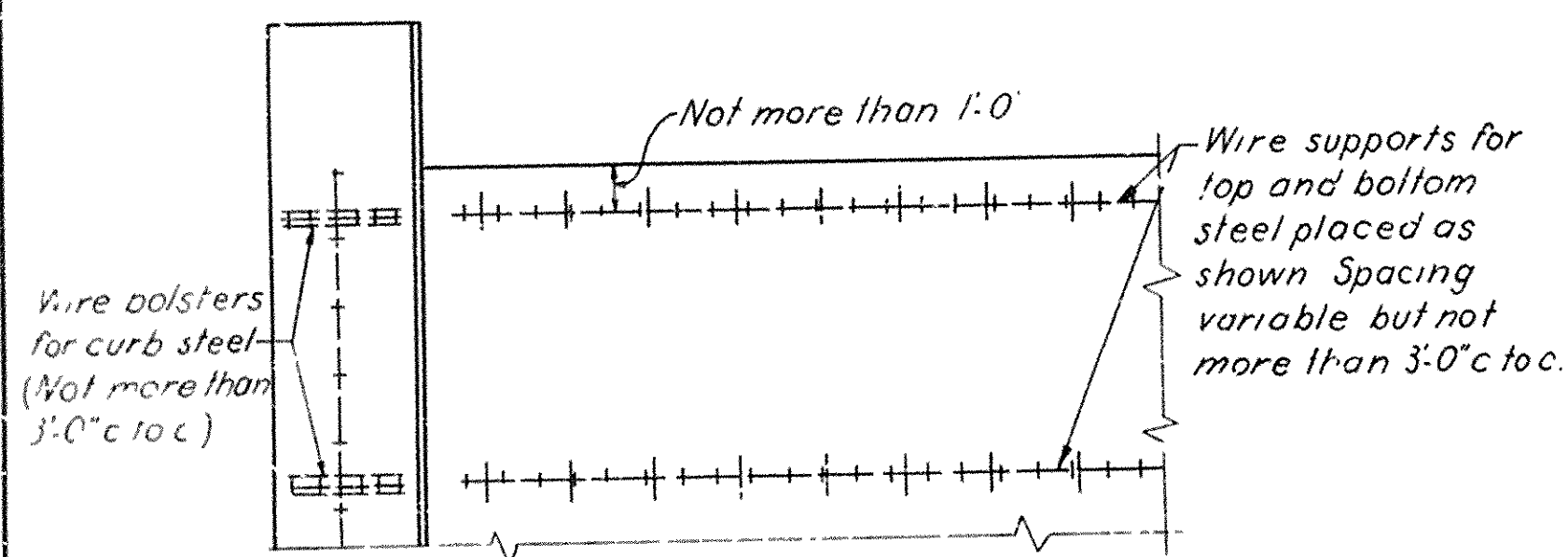
1343-5
98522

FED. ROAD DIV. NO.	STATE	PROJECT NO.	FISCAL YEAR	SHEET NO.	TOTAL SHEETS
6	ARK.	1-093-1(2) Old 1-55-1(2) New		100	347
STATE JOB NO. 10614					

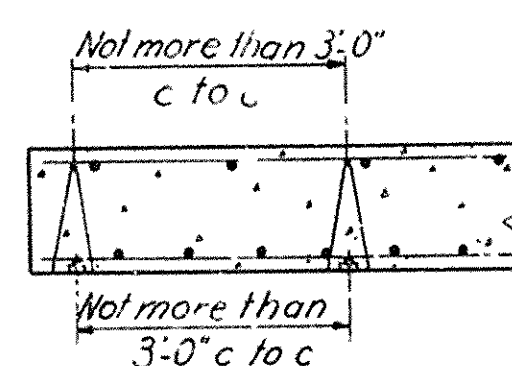
393



PART SECTION

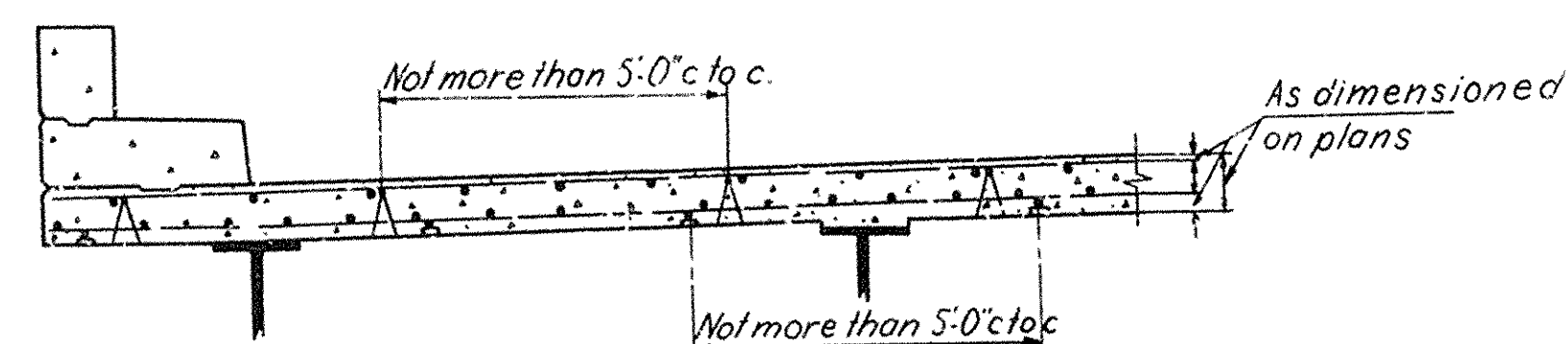


PART PLAN

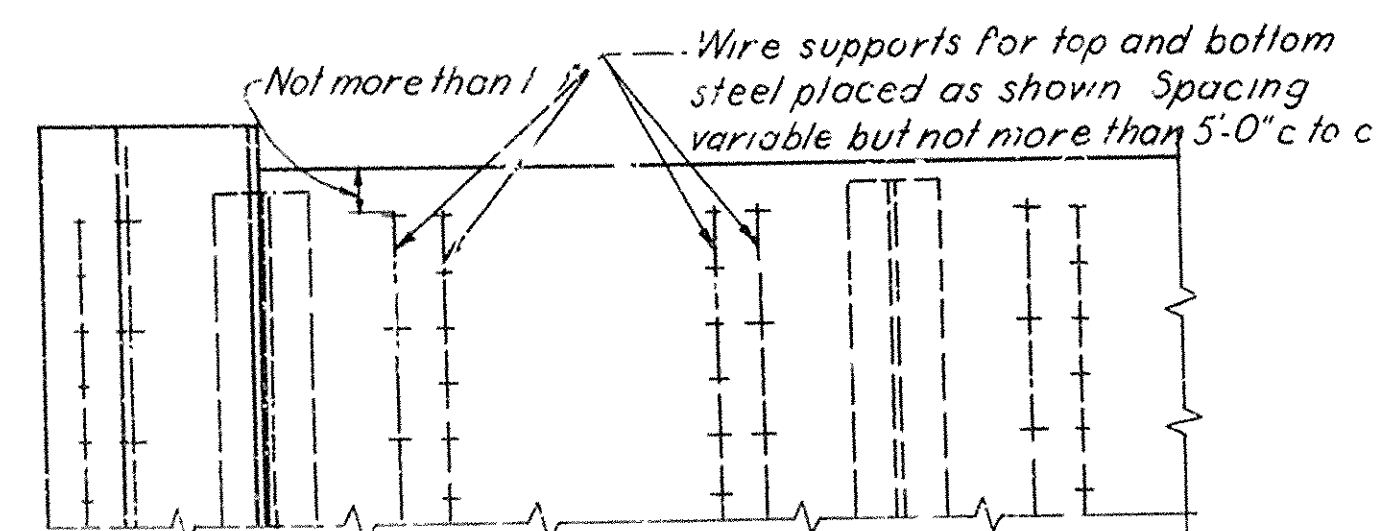


PART LONGITUDINAL SECTION

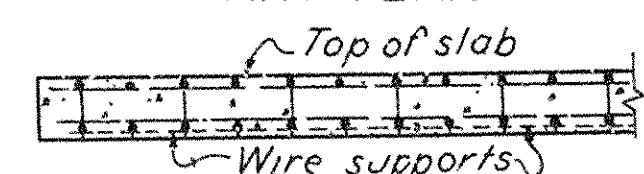
TYPICAL SLAB SPANS



PART SECTION

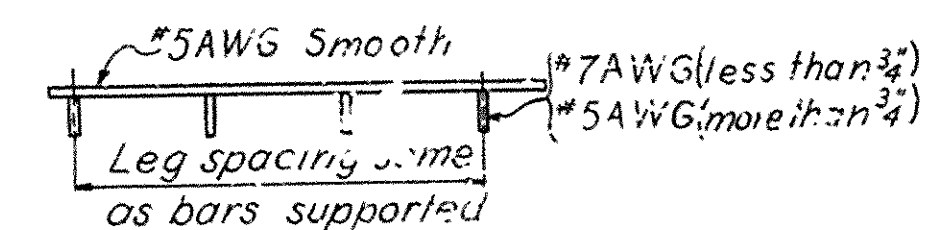


PART PLAN



PART LONGITUDINAL SECTION

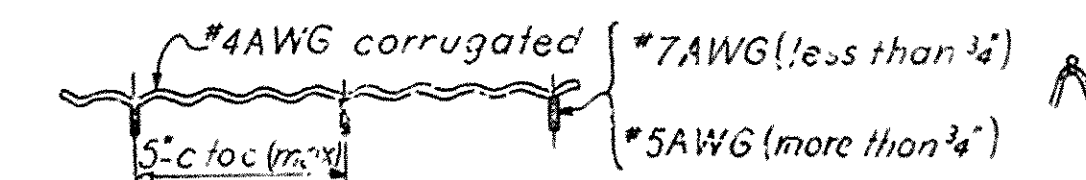
TYPICAL I-BEAM SPANS



ELEVATION

SECTION

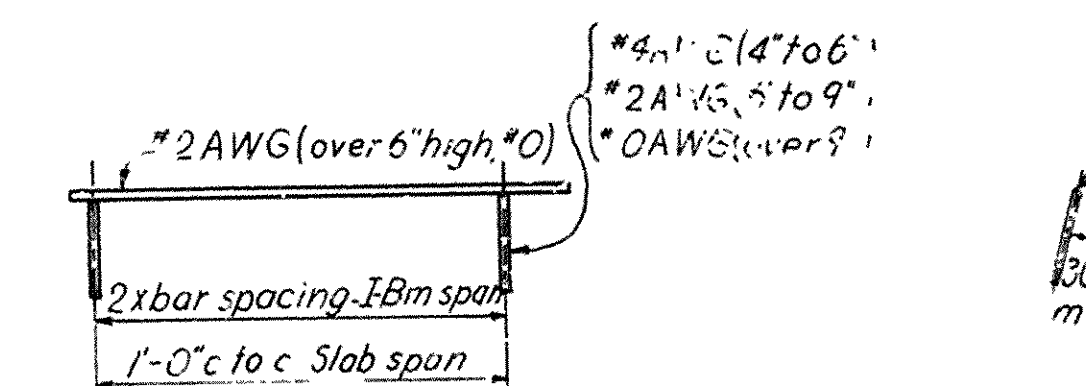
SLAB SPACER



ELEVATION

SECTION

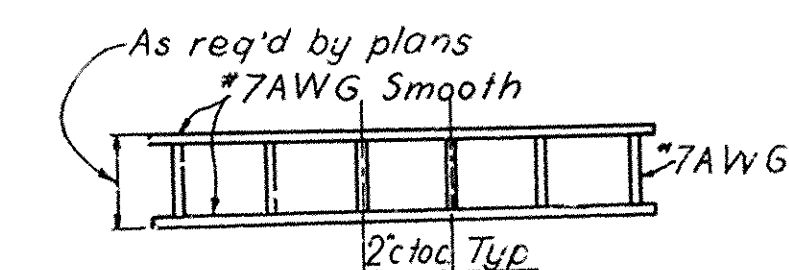
SLAB BOLSTER



ELEVATION

SECTION

CONTINUOUS HIGH CHAIR



ELEVATION

SECTION

BEAM BOLSTER UPPER

NOTES

All reinforcing steel shall be accurately located in the forms and firmly held in place by means of steel wire supports, heights of which shall be sufficient to support bars in the exact positions dimensioned on plans. Spacing of wire supports shall be approximately as given on this sheet.

Details of wire supports shown are typical and supports of other design may be used, however, shop drawings of intended designs must be submitted for approval.

Payment for wire supports in place shall be considered to be completely covered by unit price bid for other items.

All gages are American Steel and Wire Company Gages.

All contact points shall be securely welded.

All wire supports shall be made such that only ends of supporting legs shall bear upon the forms.

All dimensions are given to E of bars.

BRIDGES OVER PEMISCOT BAYOU
AT STA. 456+23.00

TYPICAL DETAILS OF SUPPORTS
AND SPACERS FOR REINFORCING STEEL

MISSISSIPPI & CRITTENDEN COUNTIES
FAI 55 INTERSTATE HIGHWAY
SECTION II

ARKANSAS STATE HIGHWAY COMMISSION
LITTLE ROCK, ARK.

DRAWN BY: F.L.C. DATE: FEB. 1957 SCALE: NOT TO SCALE

TRACED BY: F.N. DATE: FEB. 1957

CHECKED BY: R.G.N. DATE: FEB. 1957 SHEET 12 OF 12

BRIDGE NO. 3169A, B, C & D DRAWING NO. 10/24

SVERDRUP & PARCEL, INC.
ENGINEERS - ARCHITECTS
ST. LOUIS, MO.

Note: Do not scale this drawing. Follow dimensions.

1343-3
38527